

**John Winter**  
Leading UK  
Foundry Supplier



## Vacuum formed Exothermic feeder sleeves

A complete range of  
feeders sleeves to meet  
the needs of today's  
foundry.

- Our range of high quality vacuum formed exothermic sleeves use the same high quality media found in our insulating sleeves. This gives the product an approximate density of 0,5/0,7g/ cm<sup>3</sup> resulting in low thermal conductivity.
- They exhibit strong exothermic & insulating properties
- Feeder volumes can be reduced by 40/50%.

### Grades

- **EXO 25B** - Iron, Steel & Direct pour applications  
Contains ceramic fibres – Exhibits high refractoriness.

### Available types:

**MX** - Cylindrical sleeves, **OVX** - Oval sleeves, **UX** - Caps  
**OX** - Oval narrow necked down sleeves, **CX** - Domed sleeves  
**SX, TX, TX-MD, & TXB** - Round narrow necked sleeves  
**FX** - Komplat sleeves (side feeding), **TXFP** - Direct pour sleeves

All supplied with or without breaker cores.

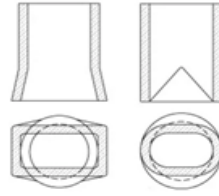
See designs over leaf.



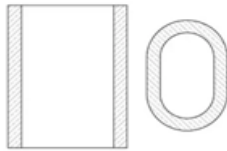
**JOHN  
WINTER**  
WORKING BETTER TOGETHER



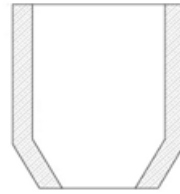
TYPE MX- CYLINDRICAL SLEEVES



TYPE OX- OVAL NARROW NECKED SLEEVES



TYPE OVX- OVAL SLEEVES



TYPE SX- NARROW NECKED SLEEVES



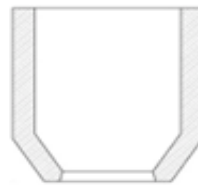
TYPE UX- CAPS SLEEVES



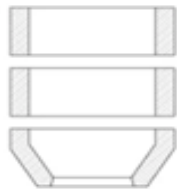
TYPE CX- DOMED SLEEVES



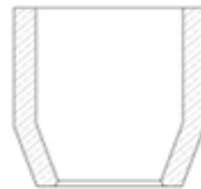
TYPE FX- KOMPLAT SLEEVES



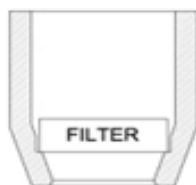
TYPE TX- NARROW NECKED SLEEVES



TYPE TX-MD - NARROW NECKED SLEEVES



TYPE TXB-MD NARROW NECKED SLEEVES



TYPE TXPF- DIRECT POUR SLEEVES

### Beaker Cores



### Covers

